



## ARIHANT PLAST

*Manufacturer of*

HDPE Pipe Fittings • HDPE Electro Fusion Fittings  
FHTC House Connection Fittings • Duct Pipe Fittings  
HDPE Sprinkler Pipe Fittings • Tank Lids

# ABOUT US



Arihant Plast established in 1996 is dedicated to making high-quality plastic products. The company specialises in producing a range of items, including HDPE Pipe Fittings, HDPE Electro Fusion Fittings, FHTC House Connection Fittings, Duct Pipe Fittings, HDPE Sprinkler Pipes fittings and Tank Lids.

With over 3000 moulds designed for different pressure levels, our range of Pipe fittings is unmatched. Our dedicated Research and Development Team, operating within our Tool Room, ensures a constant flow of fresh ideas and moulds.

Behind Arihant Plast is a group of seasoned techno-commercial experts with 25 years of invaluable experience in the field. We always strive to redefine the possibilities in plastic manufacturing.

Our commitment to society and a green world has led us to develop best pipe fittings which are environment friendly.

# MACHINERY & TECHNOLOGY



# ARIHANT PLAST

## SPRINKLER FITTINGS

1A



ADN (EX-HY) (LONG)  
(PN-10) 1½ & 1¼

1B



ADN (COM) (JAIN) (EPC)  
(MOULDED)

1C



ADN (COMP) (EPC)  
(G.I. BUSH) (1½) (¾)

1D



ADN (COMP) (EX-HY) (R)

1E



ADN (COMP) (KP)  
(G.I. BUSH) (1½) (¾)

1F



ADN (EPC) 1½ OR 1¼  
(BUTT WED)

1G



ADN (EPC) (MOULDED) (¾)

1H



ADN (EPC) (MOULDED)  
1½ & 1¼

1I



ADN (EPC)  
(WITH G.I. BRASS)

1J



ADN (EPC) 1½  
(BUTT WELD)

1K



ADN (JAIN) (OLD)

1L



ADN (JAIN) (R-HM)

# ARIHANT PLAST

## SPRINKLER FITTINGS

2A



ADN (KP) (P) ¾

2B



ADN (KP) 1½ & 1¼

2C



ADN (KP) 1½ & 1¼

2D



ADN (LONG) (HY)

2E



ADN (LONG) (KP)

2F



ADN (LONG) (LY)  
(FUSION WELD)

2G



ADN (P-HM)  
(BUTT WELD) 1½ & 1¼

2H



ADN (PHM) (1¼)

2I



ADN (R) (EX-HY)  
(LONG) (NOKHA)

2J



ADN (R) (EX-HY) (PN-10)

2K



ADN (R) (HM)

2L



ADN (R) (HY)

## SPRINKLER FITTINGS

3A



ADN (R) (PN-10)

3B



ADN (SHORT)  
(HY) 1½ & 1¼

3C



ADN (SHORT) (HY) ¾

3D



ADN (SHORT) G.I. 1½ & 1¼

3E



ADN (SHORT) (G.I BUSH)  
(1½) (¾)

3F



ADN (SHORT) (LY)  
(FUSION WELD)

3G



ADN (SHORT)  
(WITH TAIL) (R)

3H



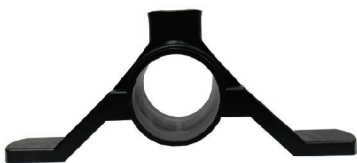
ADN (SHORT) (¾) (LY)

3I



ADN G.I BUSH STAND

3J



ADN SHORT (¾) BRASS  
WITH F-B STAND

3K



ADOPTER RUBBER  
WASHER (HY)

3L



BEND (BARE)  
(BUTT WELDING)

## SPRINKLER FITTINGS

4A



**BEND (BARE)  
(FUSION WELDING)**

4B



**BEND (BUTT WELDING)  
(PN-4)**

4C



**BEND (COM) (EPC)  
(FUSION WELD)**

4D



**BEND (COM) (JAIN)  
(EPC) (BUTT WED)**

4E



**BEND (COM) (P)  
(FUSION WELDING)**

4F



**BEND (COMP) (EPC)  
PCN (INSIDE)**

4G



**BEND (COMP)  
(D-ALUM)**

4H



**BEND (COMP) (EPC)  
PCN (OUTSIDE)**

4I



**BEND (COMP)  
(EX-HY) (R)**

4J



**BEND (COMP) (KP)  
(BUTT WELD)**

4K



**BEND (COMP) (KP)  
PCN (INSIDE)**

4L



**BEND (COMP) (KP)  
PCN (OUTSIDE)**

## SPRINKLER FITTINGS

5A



BEND (COMP) (R)  
(BUTT WELD)

5B



BEND (COMP)  
(ROTO LOCK)

5C



BEND (COMP) KP  
(FUSION WELD)

5D



BEND (EPC)  
(BUTT WELDING)

5E



BEND (HY)  
(BUTT WELDING)

5F



BEND (HY)  
(FUSION WELDING)

5G



BEND (I-T) (EPC)  
(BUTT WELDING)

5H



BEND (JAIN) (OLD)

5I



BEND (JAIN) (R-HM)

5J



BEND (LONG)  
(BUTT - FUSION WELDING)

5K



BEND (LONG)  
(FUSION WELDING)

5L



BEND (O-T) (EPC)  
BUTT WELDING)



## SPRINKLER FITTINGS

6A



**BEND (PHM)  
(BUTT WELDING)**

6B



**BEND LONG**

6C



**CLAMP (EPC)  
GALVANIZED**

6D



**COUPLE (D-ALUM)**

6E



**COUPLER (C-TYPE)  
(FUSION WELDING)**

6F



**COUPLER (C-TYPE)  
(G.I CLAMP) (BUTT WELDING)**

6G



**COUPLER (C-TYPE)  
(G.I CLAMP)**

6H



**COUPLER (D-HM)**

6I



**COUPLER (EPC)  
(G.I CLAMP) (BUTT WELDING)**

6J



**COUPLER (EPC) (OUTER)**

6K



**COUPLER (EPC)(HY)  
(FUSION WELDING)**

6L



**COUPLER (EX-HY)  
(BUTT WELDING)**

## SPRINKLER FITTINGS

7A



COUPLER (EX-HY)  
(FUSION WELDING)

7B



COUPLER (EX-HY)  
(R) (PN-10)

7C



COUPLER (H) (HY)

7D



COUPLER (H)

7E



COUPLER (HM)

7F



COUPLER (JAIN) (EPC)  
(BUTT WED)

7G



COUPLER (JAIN) (EPC)  
(FUSION WED)

7H



COUPLER (JAIN) (HM)

7I



COUPLER (JAIN) (OLD)

7J



COUPLER (JAIN) (R-HM)

7K



COUPLER (KP) (PHM)  
(BUTT WELD)

7L



COUPLER (KP) (PHM)  
(FUSION WELD)

## SPRINKLER FITTINGS

7A



COUPLER (KP)-TAIL (EPC)

7B



COUPLER (P-HM) (OUTER)

7C



COUPLER (P)

7D



COUPLER (R-TYPE)  
(LY) (LONG)

7E



COUPLER (R)  
(HY) (PN-10)

7F



COUPLER (R) (HY) (SHORT)

7G



COUPLER (R) (HY)

7H



COUPLER (R) (ID BASED)  
(FUSION WELDING)

7I



COUPLER (R) (LY) (EX-LONG)

7J



COUPLER (R) (LY) (SHORT)

7K



COUPLER (R) (PVC)

7L



COUPLER (ROTO LOCK)

## SPRINKLER FITTINGS

9A



COUPLER (SET) (KP)

9B



DRIP ADN (EPC)  
(INSIDE) (BRASS)

9C



DRIP ADN (KP) (OUTSIDE)

9D



DRIP ADN (OUTSIDE)

9E



DRIP TEE (INSIDE)  
(BRASS BUSH)

9F



DRIP TEE OUTSIDE

9G



END CAP (CAPSUL)

9H



END CAP (D-ALUM)

9I



END CAP (EPC)  
(LONG) WITH TAIL

9J



END CAP (EPC) (MOULDED)

9K



END CAP (EPC)

9L



END CAP (H)

## SPRINKLER FITTINGS

10A



END CAP (JAIN) (OLD)

10B



END CAP (JAIN) (R-HM)

10C



END CAP (KP) (P)

10D



END CAP (KP) (LONG)  
WITH TAIL

10E



END CAP (R) (EX-HY)

10F



END CAP (ROTO LOCK)

10G



END CAP (WITH NIPPLE)

10H



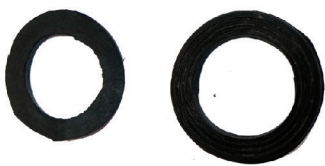
END CAP WITHOUT NIPPLE

10I



FOOT BUTTON  
WASHER (EPC)

10J



FOOT BUTTON  
WASHER

10K



FOOT BUTTON  
(EX-HY) WASHER

10L



FOOT BUTTON  
BLACK 1 1/4 & 1 1/2

## SPRINKLER FITTINGS

11A



FOOT BUTTON BLACK  $\frac{3}{4}$

11B



FOOT BUTTON G.I.  $\frac{3}{4}$

11C



FOOT BUTTON  
GOLDEN  $\frac{1}{4}$  &  $\frac{1}{2}$

11D



FOOT BUTTON GOLDEN  $\frac{3}{4}$

11E



G.I. NIPPLE

11F



GROUP (EPC) COUPLER

11G



GROUP (EPC) TAIL

11H



GROUP BEND

11I



GROUP COUPLER (D-ALUM)

11J



GROUP COUPLER (C-TYPE)

11K



GROUP COUPLER (D) (HM)

11L



GROUP COUPLER  
(EPC) (75 x 63 mm)

## SPRINKLER FITTINGS

12A



GROUP COUPLER (KP)

12B



GROUP KP SET

12C



GROUP NIPPLE (BOTH SIDE)

12D



GROUP NIPPLE  
DOUBLE SIDE

12E



GROUP NIPPLE SINGLE

12F



GROUP REDUCER  
(COMP) (EPC)

12G



GROUP REDUCER (EPC-TAIL)

12H



GROUP REDUCER (EPC)

12I



GROUP REDUCER TAIL (KP)

12J



GROUP TAIL (EPC)

12K



GROUP TAIL (KP)

12L



GROUP TAIL (LONG) (EPC)

## SPRINKLER FITTINGS

13A



GROUP TEE

13B



HDPE TOP STAND

13C



JOINT (KP+KP) TAIL

13D



JOINTER (EPC+ KP) TAIL

13E



JOINTER (EPC+KP) TAIL

13F



JOINTER (KP+EPC) TAIL

13G



L-R CLAMP  
2.9 mm GOLDEN

13H



L-R CLAMP  
3.5 mm GOLDEN

13I



L-R CLAMP ELECTRO  
PLATED (W) (KEKRA)

13J



L-R CLAMP GALVANIZED  
(W) (KEKRA)

13K



L-R CLAMP GOLDEN  
DOUBLE KHUDI

13L



L-R CLAMP  
GOLDEN SPRING



## SPRINKLER FITTINGS

14A



EPC CLAMP  
(PLATED BLACK)

14B



LATCH CLAMP  
(GALVANIZED)

14C



EPC CLAMP (JAIN)  
ELECTRO PLATED

14D



EPC CLAMP  
ELECTRO PLATED

14E



MOULDED COLLER  
WITH FLANGE

14F



MOULDED PCN  
(EPC) (SINGLE PCS)

14G



MOULDED PCN (EPC)

14H



MOULDED PCN  
(INSIDE) TAIL -P

14I



MOULDED PCN (KP)

14J



MOULDED PCN (R)

14K



MOULDED PCN KP  
(SINGLE PCS)

14L



MOULDED PCN TAIL KP

## SPRINKLER FITTINGS

15A



MOULDED TAIL (EPC) PCN

15B



MPCN (COM) (JAIN) (EPC)  
(BUTT WED)

15C



MPCN (BARE) (INSIDE)

15D



MPCN (FUSION WELD)

15E



MPCN (I-T) (JAIN) (OLD)  
(PLASTIC CLAMP)

15F



MPCN (I-T) (JAIN) (R-HM)

15G



MPCN (INSIDE)  
(FUSION WELDING)

15H



MPCN (INSIDE) (JAIN) (EPC)

15I



MPCN (INSIDE) (JAIN) (OLD)

15J



MPCN (INSIDE) (JAIN)  
(R-HM)

15K



MPCN (INSIDE)  
(JAIN) TAIL (OLD)

15L



MPCN (INSIDE) (KP)

## SPRINKLER FITTINGS

16A



MPCN (INSIDE)  
(ROTO LOCK) (COUPLER)

16B



MPCN (INSIDE)  
(ROTO LOCK) TAIL

16C



MPCN (INSIDE) (TAIL)  
(ROTO LOCK)

16D



MPCN (O-T) (JAIN) (OLD)

16E



MPCN (O-T) (JAIN) (R-HM)

16F



MPCN (O-T) (LONG)  
(COUPLER)

16G



MPCN (O-T)  
(ROTO LOCK) TAIL

16H



MPCN (OUTER) (JAIN)  
(OLD)

16I



MPCN (OUTER)  
(ROTO LOCK)

16J



MPCN (OUTSIDE) (TAIL)  
(JAIN) (EPC)

16K



MPCN (OUTSIDE) (TAIL)  
(JAIN) (OLD)

16L



MPCN COUPLER  
(OUTER) (JAIN) (R)

## SPRINKLER FITTINGS

17A



MPCN OUTER (HM)

17B



MPCN TAIL  
(OUTER) (JAIN) (R)

17C



MPCN TAIL (INSIDE) (EPC)

17D



OUTER NIPPLE

17E



PCN (COM) (EPC)  
(FUSION WELD)

17F



PCN (EPC) (G.I.)  
(NIPPLE BUTT WED)

17G



PCN (INSIDE) (KP)

17H



PCN (INSIDE) (KP)

17I



PCN (JAIN) (OLD)  
(G.I. NIPPLE & PCN CLAMP)

17J



PCN (KP) (G.I. NIPPLE  
& PCN CLAMP)

17K



PCN (LONG)  
(G.I. NIPPLE) TAIL

17L



PCN (LONG) (JAIN) (OLD)

## SPRINKLER FITTINGS

18A



PCN (LONG) (JAIN) (R- HM)

18B



PIPE END CAP

18C



REDUCER (COMP) (EPC)

18D



REDUCER (COMP) (KP)

18E



REDUCER (COMP)  
(KP+EPC)

18F



REDUCER (KP+EPC) (TAIL)

18G



RUBBER RING (DC) FINE

18H



RUBBER RING (DC) SUPER

18I



RUBBER RING (JAIN)

18J



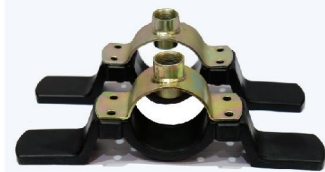
RUBBER RING (ROTO LOCK)

18K



RUBBER RING SUPER

18L



SPR TOP & HDPE STAND

## SPRINKLER FITTINGS

19A



STRIP (D-ALUM)

19B



TAIL BEND

19C



TAIL (C-TYPE)  
(FUSION WELDING)

19D



TAIL (C) (HY)  
(FUSION WELD)

19E



TAIL (D-ALUM)  
(WITH HUCK) (FUS- WED)

19F



TAIL (D-ALUM) (WITHOUT  
HUCK) (FUS- WED)

19G



TAIL (EPC) (EX-HY)  
(FUSION WELDING)

19H



TAIL (EPC)  
(FUSION WELDING)

19I



TAIL (EPC) (OUTER)

19J



TAIL (EX-HY)  
(BUTT WELDING)

19K



TAIL (EX-HY) (R) (PN-10)

19L



TAIL (JAIN)  
(EPC) (BUTT WED)

## SPRINKLER FITTINGS

20A



TAIL (JAIN) (EPC)  
(FUSION WED)

20B



TAIL (JAIN) (OLD)

20C



TAIL (JAIN) (R-TYPE)

20D



TAIL (JAIN) (NEW)

20E



TAIL (KP) (P) (BUTT WELD)

20F



TAIL (KP) (P) (FUSION)

20G



TAIL (KP) (P) PCN  
(C.I.) (NIPPLE)

20H



TAIL (P) (OUTER)

20I



TAIL (R) (BUTT WELD)

20J



TAIL (R) (FUSION)

20K



TAIL (R) (HY) (NOKHA)

20L



TAIL (R) (HY)

# ARIHANT PLAST

## SPRINKLER FITTINGS

21A



TAIL (R) (ID BASED)  
(FUSION WELDING)

21B



TAIL (ROTO LOCK)

21C



TAIL LONG BEND

21D



TAIL PCN (EPC) (G.I NIPPLE)  
(BUTT WELD)

21E



TAIL PCN (JAIN)  
(EPC) (G.I NIPPLE)

21F



TAIL (EPC) (G.I CLAMP)  
(BUTT WELDING)

21G



TEE (COMP) (D-ALUM)

21H



TEE (BARE)  
(BUTT WELDING)

21I



TEE (BUTT WELDING)  
(PN-4)

21J



TEE (COM) (EPC)  
(FUSION WELD)

21K



TEE (COM) (JAIN)  
(EPC) (BUTT WED)

21L



TEE (COMP) (EPC)  
PCN (OUT SIDE)



# ARIHANT PLAST

## SPRINKLER FITTINGS

22A



TEE (COMP) (EX-HY) (R)

22B



TEE (COMP) (KP) PCN (INSIDE)

22C



TEE (COMP) (ROTO LOCK)

22D



TEE (COMP) KP (BUTT WELD)

22E



TEE (EPC) (BUTT WELD)

22F



TEE (HY) (BUTT WELD)

22G



TEE (HY) (BUTT WELD)

22H



TEE (HY) (FUSION WELD)

22I



TEE (HY) (FUSION WELD)

22J



TEE (INSIDE) (EPC) (BUTT WELD)

22K



TEE (JAIN) (OLD)

22L



TEE (JAIN) (R-HM)

## SPRINKLER FITTINGS

23A



TEE (KP) PCN (OUTSIDE)

23B



TEE (LONG)  
(FUSION WELDING)

23C



TEE (LONG) (LY)  
(FUSION WELDING)

23D



TEE (LONG)

23E



TEE (O-T) (EPC)  
(BUTT WELDING)

23F



Y (BARE)

23G



Y (COMP) (KP)+TAIL (EPC)

23H



Y (COMP) (KP+EPC) TAIL

23I



Y WELDING (EPC+KP)

23J



HDPE ADN JAIN (C-TYPE)  
(G.I. SOCKET) & HDPE STAND

23K



HDPE TEE (COMP)  
(C-TYPE) (MOULDED) (HR)

23L



HDPE BEND (COMP)  
(C-TYPE) (MOULDED)

## SPRINKLER FITTINGS

23A



HDPE BEND (COMP)  
(C-TYPE) (MOULDED) (HR)

23B



HDPE BEND (COMP)  
(C-TYPE) (MOULDED)

23C



HDPE VENTRY  
ADN (BARE)

23D



HDPE VENTRY  
ADN (C-TYPE)

23E



HDPE VENTRY  
ADN (JAIN) (C-TYPE)

23F



HDPE VENTRY  
ADN TAIL (P-TYPE)

23G



HDPE VENTRY  
ADN (P/HM)

23H



HDPE VENTRY  
ADN TAIL (C-TYPE)

23I



HDPE VENTRY  
TAIL (C-TYPE)



**ADDRESS**

G-119, Road No. 3A, RIICO Industrial Area,  
Bindayaka Sirsi Road, Jaipur - 302012, Rajasthan, India

**PHONE**

+91 (141) 2240170 | +91 9829010745

**EMAIL**

[info@arihantplast.in](mailto:info@arihantplast.in)

**WEBSITE**

[www.arihantplast.in](http://www.arihantplast.in)